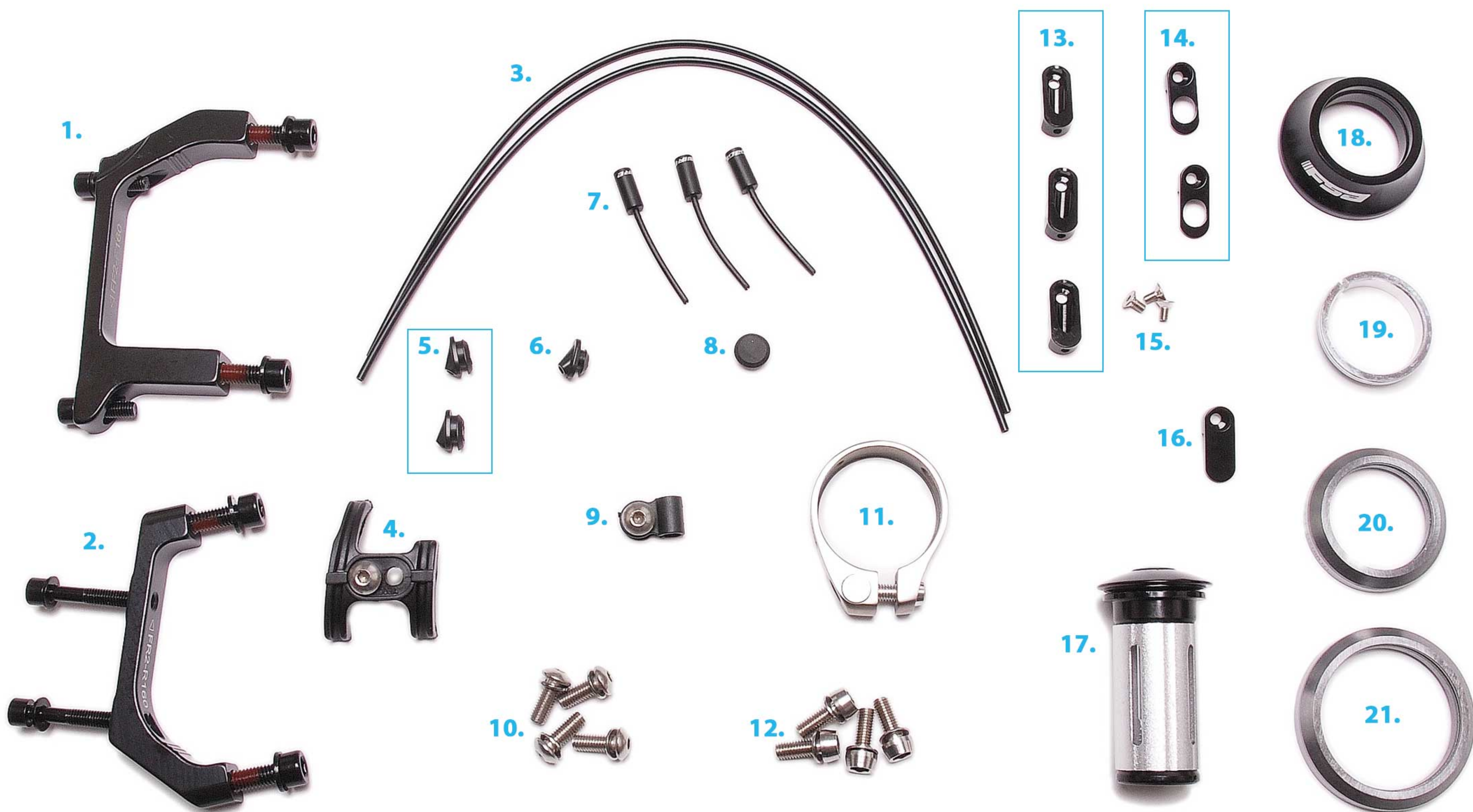




RACELIGHT GF_Ti DISC – FRAME PARTS KIT



1. FRONT FLAT-TO-POST MOUNT ADAPTER – 2x fitting bolts, 2x caliper bolts (160mm adapter)
2. REAR FLAT-TO-POST MOUNT ADAPTER – 2x fitting bolts, 2x caliper bolts (160mm adapter)
3. UNDER BB CABLE ROUTING TUBES – helps to guide front and rear derailleur cable under the BB
4. UNDER BB CABLE GUIDE AND BOLT
5. 2x Di2 GROMMETS – for downtube and chainstay when running Di2
6. Di2 WIRE BUNG – for front derailleur on seat tube
7. 3x CABLE GUIDE FERRULES – for ports fitted to frame
8. Di2 BLANKING BUNG – fitted to frame seat tube
9. BRAKE CABLE/HOSE GUIDE AND BOLT – disc brake cable/hose for inside of chainstay
10. 4x BOTTLE BOLTS – comes fitted to frame
11. TITANIUM SEAT CLAMP
12. 4x RACK MOUNT BOLTS – comes fitted to frame seat tube
13. 3x CABLE GUIDE PORTS – comes fitted to the frame
14. 2x Di2 GUIDE PORTS – to replace fitted mechanical guide ports when running Di2 - fit (3.) into these ports.
15. FITTING BOLTS – come fitted to frame cable ports
16. 1x BLANKING PORT – for downtube when running Di2
17. FORK STEERER BUNG
18. HEADSET BEARING CAP
19. HEADSET TOP BEARING PRELOAD WEDGE
20. HEADSET TOP BEARING
21. HEADSET LOWER BEARING