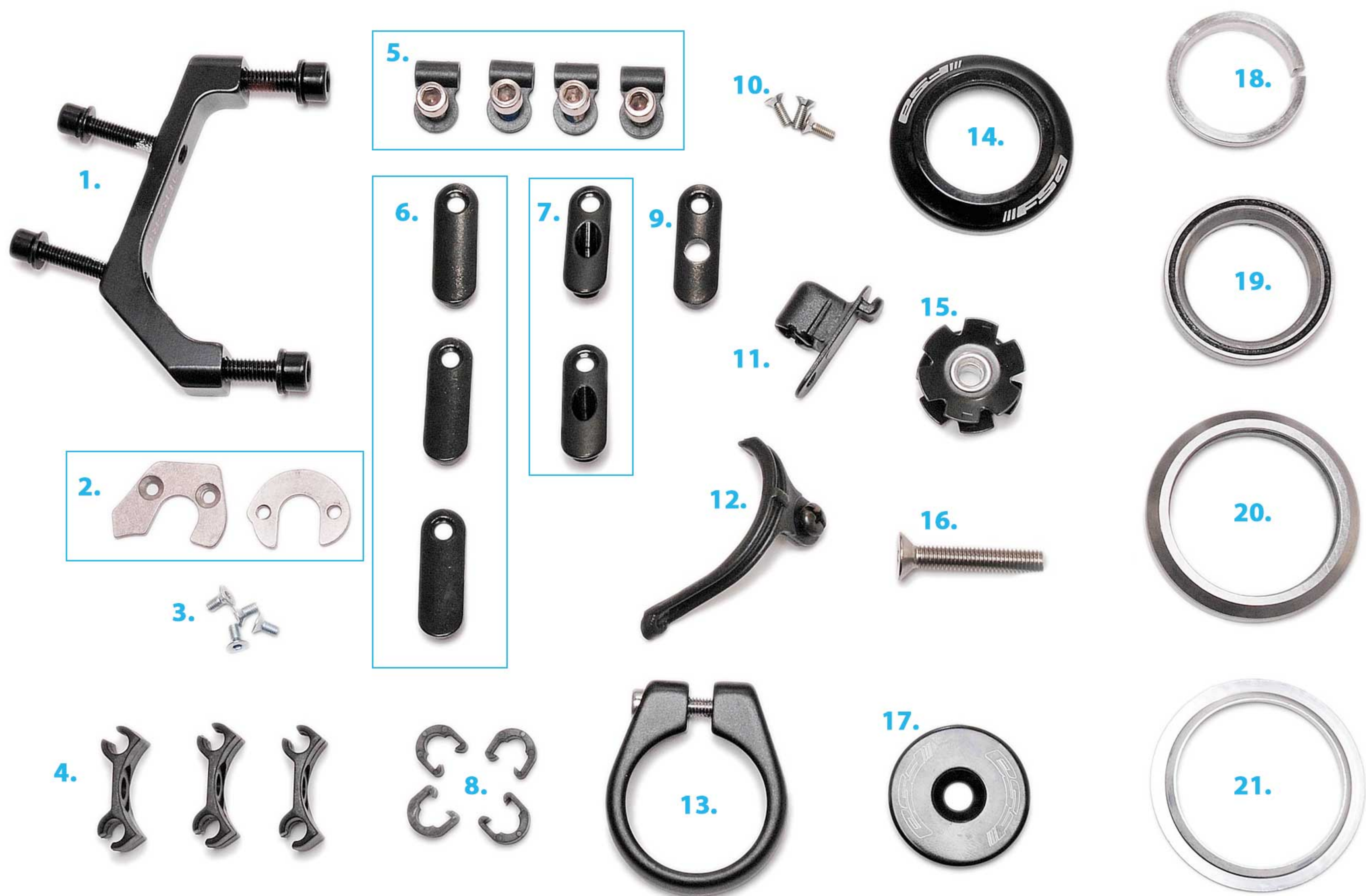




CXRACE – FRAME PARTS KIT



1. REAR FLAT-TO-POST MOUNT ADAPTER – 2x fitting bolts, 2x caliper bolts (160mm adapter)
2. DROPOUT ADAPTER FOR 130MM RIM WHEELS – when running cantilever brakes
3. FITTING BOLTS – 4x 5.8mm for dropout adapters
4. 3x BRAKE/GEAR CABLE/HOSE GUIDES – for top tube rear derailleur cable and cantilever brake cable (if being used)
5. 4x REAR DERAILLEUR CABLE GUIDE AND BOLTS – 5.7mm port size for rear derailleur cable outer along top tube
6. 4x BLANKING PORTS – for when running disc brakes and 1x setups
7. 2x BRAKE CABLE/HOSE GUIDE PORT – 5.7mm port size for hose/cable outer
8. 4x BRAKE/GEAR CABLE/HOSE CLIPS – 3x for drive side seatstay for rear derailleur, 1x underside of non-drive chainstay for disc brake (if being used).
9. DI2 CABLE PORT – for drive side downtube when running Di2
10. FITTING BOLTS – 3x 7.9mm for cable ports
11. FRONT MECH BARREL PORT – front derailleur cable barrel port
12. UNDER BB CABLE GUIDE – for front derailleur, with bolt.
13. SEAT CLAMP
14. HEADSET BEARING CAP
15. FORK STAR NUT – if needed, depending on fork you fit
16. FORK STAR NUT BOLT – if needed, depending on fork you fit
17. HEADSET TOP CAP
18. TOP BEARING PRELOADING WEDGE
19. HEADSET TOP BEARING
20. HEADSET LOWER BEARING
21. CROWN RACE – if needed, depending on fork you fit.